

Acta Crystallographica Section E

Structure Reports

Online

ISSN 1600-5368

5,7-Dihydrodibenzo[*c,e*]thiepine

Nobuto Yoshinari and Takumi Konno*

Department of Chemistry, Graduate School of Science, Osaka University, Toyonaka, Osaka 560-0043, Japan

Correspondence e-mail: konno@chem.sci.osaka-u.ac.jp

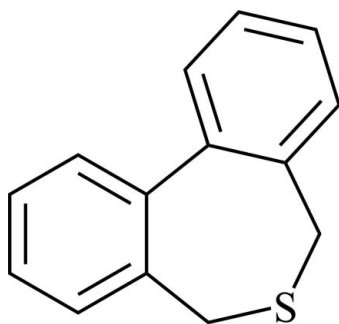
Received 26 February 2009; accepted 10 March 2009

Key indicators: single-crystal X-ray study; $T = 200$ K; mean $\sigma(\text{C}-\text{C}) = 0.004$ Å; R factor = 0.063; wR factor = 0.165; data-to-parameter ratio = 18.1.

In the title compound, $\text{C}_{14}\text{H}_{12}\text{S}$, the central seven-membered C_6S ring has a twist-boat conformation. The dihedral angle between the two benzene rings is $52.4(1)^\circ$.

Related literature

For the preparation of a pair of atrop diastereomeric Rh^{III} complexes having a 2,2'-bis(2-aminoethylthiomethyl)-1,1'-biphenyl ligand, see: Yoshinari & Konno (2008). For the synthesis, see: Foubelo *et al.* (2005).



Experimental

Crystal data

$\text{C}_{14}\text{H}_{12}\text{S}$

$M_r = 212.30$

Monoclinic, $P2_1/n$
 $a = 5.645(3)$ Å
 $b = 17.316(9)$ Å
 $c = 11.398(5)$ Å
 $\beta = 92.444(19)^\circ$
 $V = 1113.1(10)$ Å³

$Z = 4$
 Mo $K\alpha$ radiation
 $\mu = 0.25$ mm⁻¹
 $T = 200$ K
 $0.15 \times 0.15 \times 0.10$ mm

Data collection

Rigaku R-AXIS RAPID
 diffractometer
 Absorption correction: multi-scan
 (ABSCOR; Higashi, 1995)
 $T_{\text{min}} = 0.962$, $T_{\text{max}} = 0.975$

7548 measured reflections
 2464 independent reflections
 1324 reflections with $I > 2\sigma(I)$
 $R_{\text{int}} = 0.114$

Refinement

$R[F^2 > 2\sigma(F^2)] = 0.063$
 $wR(F^2) = 0.165$
 $S = 1.06$
 2464 reflections

136 parameters
 H-atom parameters constrained
 $\Delta\rho_{\text{max}} = 0.31$ e Å⁻³
 $\Delta\rho_{\text{min}} = -0.30$ e Å⁻³

Data collection: *PROCESS-AUTO* (Rigaku, 1998); cell refinement: *PROCESS-AUTO*; data reduction: *CrystalStructure* (Rigaku/MSK, 2004); program(s) used to solve structure: *SIR97* (Altomare *et al.*, 1999); program(s) used to refine structure: *SHELXL97* (Sheldrick, 2008); molecular graphics: *Mercury* (Macrae *et al.*, 2006); software used to prepare material for publication: *publCIF* (Westrip, 2009).

This work was supported by a Grant-in-Aid for JSPS Fellows from the Japan Society for the Promotion of Science (JSPS).

Supplementary data and figures for this paper are available from the IUCr electronic archives (Reference: IS2397).

References

- Altomare, A., Burla, M. C., Camalli, M., Cascarano, G. L., Giacovazzo, C., Guagliardi, A., Moliterni, A. G. G., Polidori, G. & Spagna, R. (1999). *J. Appl. Cryst.* **32**, 115–119.
- Foubelo, F., Moreno, B., Soler, T. & Yus, M. (2005). *Tetrahedron*, **61**, 9082–9096.
- Higashi, T. (1995). *ABSCOR*. Rigaku Corporation, Tokyo, Japan.
- Macrae, C. F., Edgington, P. R., McCabe, P., Pidcock, E., Shields, G. P., Taylor, R., Towler, M. & van de Streek, J. (2006). *J. Appl. Cryst.* **39**, 453–457.
- Rigaku (1998). *PROCESS-AUTO*. Rigaku Corporation, Tokyo, Japan.
- Rigaku/MSK (2004). *CrystalStructure*. Rigaku/MSK, The Woodlands, Texas, USA.
- Sheldrick, G. M. (2008). *Acta Cryst.* **A64**, 112–122.
- Westrip, S. P. (2009). *publCIF*. In preparation.
- Yoshinari, N. & Konno, T. (2008). *Inorg. Chem.* **47**, 7450–7452.

supplementary materials

Acta Cryst. (2009). E65, o774 [doi:10.1107/S1600536809008769]

5,7-Dihydrodibenzo[*c,e*]thiepine

N. Yoshinari and T. Konno

Comment

As a part of our ongoing studies on the synthesis and structures of the transition metal complexes with thioether donor groups, we prepared a pair of atrop diastereomeric Rh^{III} complexes having a 2,2'-bis(2-aminoethylthiomethyl)-1,1'-biphenyl ligand (Yoshinari & Konno, 2008). We report herein the structure of the title compound, 5,7-dihydrodibenzo[*c,e*]thiepine, (I), which was accidentally obtained in the course of a direct synthesis of 2,2'-bis(2-aminoethylthiomethyl)-1,1'-biphenyl from 2,2'-bis(bromomethyl)-1,1'-biphenyl and 2-aminoethanethiol.

In the crystal structure of (I), two aromatic rings (C2—C7 and C8—C13) are inclined around the C7—C8 bond with a dihedral angle of 52.4 (1)°.

This compound (I) has been synthesized by treatment of 2,2'-bis(bromomethyl)-1,1'-biphenyl with sulfide anion, but has not been structurally characterized (Foubelo *et al.* 2005).

Experimental

The reaction of 2,2'-bis(bromomethyl)-1,1'-biphenyl with 2-aminoethanethiol in ethanol gave a colorless solution. To the resulting solution was added diethylether, followed by allowing to stand in a refrigerator, which produced colorless stick crystals of (I) as a byproduct.

Refinement

H atoms bonded to C atoms were placed at calculated positions (C—H = 0.95 or 0.99 Å) and refined as riding, with $U_{\text{iso}}(\text{H}) = 1.2U_{\text{eq}}(\text{C})$.

Figures

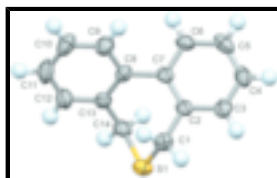


Fig. 1. Perspective view of the title compound, (I), with the atom numbering scheme. Displacement ellipsoids are at the 70% probability level. H atoms are drawn as spheres of arbitrary radii.

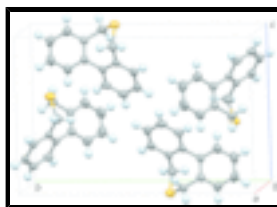


Fig. 2. The crystal packing of title compound, (I). Displacement ellipsoids are at the 70% probability level. H atoms are drawn as spheres of arbitrary radii.

5,7-Dihydrodibenzo[*c,e*]thiepine

Crystal data

$C_{14}H_{12}S$	$F_{000} = 448$
$M_r = 212.30$	$D_x = 1.267 \text{ Mg m}^{-3}$
Monoclinic, $P2_1/n$	Mo $K\alpha$ radiation
Hall symbol: -P 2yn	$\lambda = 0.71075 \text{ \AA}$
$a = 5.645 (3) \text{ \AA}$	Cell parameters from 4537 reflections
$b = 17.316 (9) \text{ \AA}$	$\theta = 3.6\text{--}27.5^\circ$
$c = 11.398 (5) \text{ \AA}$	$\mu = 0.25 \text{ mm}^{-1}$
$\beta = 92.444 (19)^\circ$	$T = 200 \text{ K}$
$V = 1113.1 (10) \text{ \AA}^3$	Prismatic, colourless
$Z = 4$	$0.15 \times 0.15 \times 0.10 \text{ mm}$

Data collection

Rigaku R-Axis RAPID diffractometer	2464 independent reflections
Radiation source: fine-focus sealed tube	1324 reflections with $I > 2\sigma(I)$
Monochromator: graphite	$R_{\text{int}} = 0.114$
Detector resolution: $10.00 \text{ pixels mm}^{-1}$	$\theta_{\text{max}} = 27.5^\circ$
$T = 200 \text{ K}$	$\theta_{\text{min}} = 3.6^\circ$
ω scans	$h = -4 \rightarrow 7$
Absorption correction: multi-scan (ABSCOR; Higashi, 1995)	$k = -22 \rightarrow 22$
$T_{\text{min}} = 0.962, T_{\text{max}} = 0.975$	$l = -14 \rightarrow 14$
7548 measured reflections	

Refinement

Refinement on F^2	Secondary atom site location: difference Fourier map
Least-squares matrix: full	Hydrogen site location: inferred from neighbouring sites
$R[F^2 > 2\sigma(F^2)] = 0.063$	H-atom parameters constrained
$wR(F^2) = 0.165$	$w = 1/[\sigma^2(F_o^2) + (0.0655P)^2]$
$S = 1.06$	where $P = (F_o^2 + 2F_c^2)/3$
2464 reflections	$(\Delta/\sigma)_{\text{max}} < 0.001$
136 parameters	$\Delta\rho_{\text{max}} = 0.31 \text{ e \AA}^{-3}$
Primary atom site location: structure-invariant direct methods	$\Delta\rho_{\text{min}} = -0.30 \text{ e \AA}^{-3}$
	Extinction correction: none

Special details

Geometry. All e.s.d.'s (except the e.s.d. in the dihedral angle between two l.s. planes) are estimated using the full covariance matrix. The cell e.s.d.'s are taken into account individually in the estimation of e.s.d.'s in distances, angles and torsion angles; correlations between e.s.d.'s in cell parameters are only used when they are defined by crystal symmetry. An approximate (isotropic) treatment of cell e.s.d.'s is used for estimating e.s.d.'s involving l.s. planes.

Refinement. Refinement of F^2 against ALL reflections. The weighted R -factor wR and goodness of fit S are based on F^2 , conventional R -factors R are based on F , with F set to zero for negative F^2 . The threshold expression of $F^2 > \sigma(F^2)$ is used only for calculating R -factors(gt) *etc.* and is not relevant to the choice of reflections for refinement. R -factors based on F^2 are statistically about twice as large as those based on F , and R -factors based on ALL data will be even larger.

Fractional atomic coordinates and isotropic or equivalent isotropic displacement parameters (\AA^2)

	<i>x</i>	<i>y</i>	<i>z</i>	$U_{\text{iso}}^*/U_{\text{eq}}$
S1	1.27862 (17)	0.41043 (5)	-0.05701 (6)	0.0391 (3)
C1	1.3831 (7)	0.39078 (19)	0.0932 (2)	0.0357 (8)
H1	1.4103	0.3346	0.1023	0.043*
H2	1.5369	0.4172	0.1083	0.043*
C2	1.2131 (6)	0.41676 (17)	0.1826 (2)	0.0281 (7)
C3	1.2565 (7)	0.48526 (17)	0.2447 (2)	0.0330 (8)
H3	1.3926	0.5153	0.2294	0.040*
C4	1.1020 (7)	0.50965 (19)	0.3284 (2)	0.0363 (9)
H4	1.1289	0.5572	0.3684	0.044*
C5	0.9098 (6)	0.4648 (2)	0.3532 (2)	0.0363 (9)
H5	0.8061	0.4810	0.4120	0.044*
C6	0.8660 (6)	0.39652 (19)	0.2937 (2)	0.0332 (8)
H6	0.7331	0.3659	0.3123	0.040*
C7	1.0160 (6)	0.37196 (17)	0.2059 (2)	0.0276 (8)
C8	0.9612 (6)	0.30059 (17)	0.1387 (2)	0.0293 (7)
C9	0.9182 (7)	0.23099 (19)	0.1957 (3)	0.0369 (8)
H7	0.9236	0.2295	0.2790	0.044*
C10	0.8682 (7)	0.1646 (2)	0.1335 (3)	0.0420 (9)
H8	0.8406	0.1176	0.1738	0.050*
C11	0.8582 (8)	0.1662 (2)	0.0120 (3)	0.0483 (10)
H9	0.8242	0.1204	-0.0313	0.058*
C12	0.8979 (7)	0.23477 (19)	-0.0461 (3)	0.0395 (9)
H10	0.8892	0.2357	-0.1295	0.047*
C13	0.9499 (6)	0.30201 (17)	0.0150 (2)	0.0270 (7)
C14	0.9761 (6)	0.37741 (18)	-0.0492 (2)	0.0320 (8)
H11	0.8833	0.4175	-0.0095	0.038*
H12	0.9073	0.3716	-0.1300	0.038*

Atomic displacement parameters (\AA^2)

	U^{11}	U^{22}	U^{33}	U^{12}	U^{13}	U^{23}
S1	0.0500 (6)	0.0390 (5)	0.0295 (4)	-0.0065 (5)	0.0140 (4)	0.0003 (4)

supplementary materials

C1	0.038 (2)	0.0342 (19)	0.0360 (16)	-0.0057 (17)	0.0081 (14)	-0.0011 (14)
C2	0.041 (2)	0.0229 (16)	0.0206 (13)	0.0035 (15)	0.0040 (12)	0.0033 (12)
C3	0.046 (2)	0.0246 (17)	0.0286 (15)	-0.0038 (16)	0.0003 (14)	0.0045 (13)
C4	0.057 (3)	0.0234 (17)	0.0289 (16)	0.0046 (17)	0.0016 (15)	-0.0023 (13)
C5	0.044 (2)	0.041 (2)	0.0239 (15)	0.0118 (18)	0.0062 (14)	-0.0004 (14)
C6	0.039 (2)	0.039 (2)	0.0226 (14)	-0.0031 (16)	0.0078 (13)	0.0036 (13)
C7	0.038 (2)	0.0242 (17)	0.0213 (14)	0.0017 (15)	0.0039 (13)	0.0045 (12)
C8	0.033 (2)	0.0237 (17)	0.0312 (15)	-0.0039 (15)	0.0029 (13)	0.0009 (12)
C9	0.045 (2)	0.0331 (19)	0.0326 (16)	-0.0082 (17)	-0.0004 (14)	0.0038 (14)
C10	0.048 (3)	0.0267 (19)	0.051 (2)	-0.0082 (18)	-0.0012 (17)	0.0045 (15)
C11	0.069 (3)	0.027 (2)	0.048 (2)	-0.009 (2)	-0.0008 (18)	-0.0093 (15)
C12	0.056 (3)	0.0317 (19)	0.0310 (16)	-0.0033 (18)	0.0023 (15)	-0.0054 (14)
C13	0.0226 (18)	0.0290 (18)	0.0296 (15)	-0.0006 (15)	0.0033 (12)	0.0012 (12)
C14	0.043 (2)	0.0316 (18)	0.0216 (14)	0.0011 (17)	0.0045 (13)	0.0035 (12)

Geometric parameters (Å, °)

S1—C14	1.807 (4)	C7—C8	1.480 (4)
S1—C1	1.819 (3)	C8—C9	1.395 (4)
C1—C2	1.499 (4)	C8—C13	1.409 (4)
C1—H1	0.9900	C9—C10	1.374 (5)
C1—H2	0.9900	C9—H7	0.9500
C2—C7	1.391 (4)	C10—C11	1.384 (4)
C2—C3	1.397 (4)	C10—H8	0.9500
C3—C4	1.386 (5)	C11—C12	1.382 (5)
C3—H3	0.9500	C11—H9	0.9500
C4—C5	1.373 (5)	C12—C13	1.382 (4)
C4—H4	0.9500	C12—H10	0.9500
C5—C6	1.381 (4)	C13—C14	1.507 (4)
C5—H5	0.9500	C14—H11	0.9900
C6—C7	1.404 (4)	C14—H12	0.9900
C6—H6	0.9500		
C14—S1—C1	99.41 (15)	C9—C8—C13	118.6 (3)
C2—C1—S1	113.1 (3)	C9—C8—C7	121.2 (2)
C2—C1—H1	109.0	C13—C8—C7	120.2 (2)
S1—C1—H1	109.0	C10—C9—C8	121.3 (3)
C2—C1—H2	109.0	C10—C9—H7	119.3
S1—C1—H2	109.0	C8—C9—H7	119.3
H1—C1—H2	107.8	C9—C10—C11	119.8 (3)
C7—C2—C3	120.1 (3)	C9—C10—H8	120.1
C7—C2—C1	120.2 (3)	C11—C10—H8	120.1
C3—C2—C1	119.7 (3)	C12—C11—C10	119.8 (3)
C4—C3—C2	120.3 (3)	C12—C11—H9	120.1
C4—C3—H3	119.8	C10—C11—H9	120.1
C2—C3—H3	119.8	C13—C12—C11	121.2 (3)
C5—C4—C3	119.7 (3)	C13—C12—H10	119.4
C5—C4—H4	120.1	C11—C12—H10	119.4
C3—C4—H4	120.1	C12—C13—C8	119.3 (3)
C4—C5—C6	120.6 (3)	C12—C13—C14	120.6 (3)

C4—C5—H5	119.7	C8—C13—C14	120.0 (3)
C6—C5—H5	119.7	C13—C14—S1	114.2 (2)
C5—C6—C7	120.6 (3)	C13—C14—H11	108.7
C5—C6—H6	119.7	S1—C14—H11	108.7
C7—C6—H6	119.7	C13—C14—H12	108.7
C2—C7—C6	118.6 (3)	S1—C14—H12	108.7
C2—C7—C8	121.2 (3)	H11—C14—H12	107.6
C6—C7—C8	120.2 (3)		
C14—S1—C1—C2	-45.4 (3)	C2—C7—C8—C13	-51.6 (5)
S1—C1—C2—C7	79.6 (3)	C6—C7—C8—C13	127.2 (3)
S1—C1—C2—C3	-102.0 (3)	C13—C8—C9—C10	0.7 (5)
C7—C2—C3—C4	-1.0 (5)	C7—C8—C9—C10	-179.7 (4)
C1—C2—C3—C4	-179.4 (3)	C8—C9—C10—C11	-0.5 (5)
C2—C3—C4—C5	2.2 (5)	C9—C10—C11—C12	-0.2 (6)
C3—C4—C5—C6	-1.5 (5)	C10—C11—C12—C13	0.6 (6)
C4—C5—C6—C7	-0.5 (5)	C11—C12—C13—C8	-0.4 (6)
C3—C2—C7—C6	-1.0 (4)	C11—C12—C13—C14	-175.8 (4)
C1—C2—C7—C6	177.4 (3)	C9—C8—C13—C12	-0.3 (5)
C3—C2—C7—C8	177.8 (3)	C7—C8—C13—C12	-179.8 (3)
C1—C2—C7—C8	-3.7 (4)	C9—C8—C13—C14	175.1 (3)
C5—C6—C7—C2	1.8 (4)	C7—C8—C13—C14	-4.4 (5)
C5—C6—C7—C8	-177.1 (3)	C12—C13—C14—S1	-105.8 (3)
C2—C7—C8—C9	128.8 (3)	C8—C13—C14—S1	78.8 (3)
C6—C7—C8—C9	-52.3 (5)	C1—S1—C14—C13	-43.6 (2)

Fig. 1

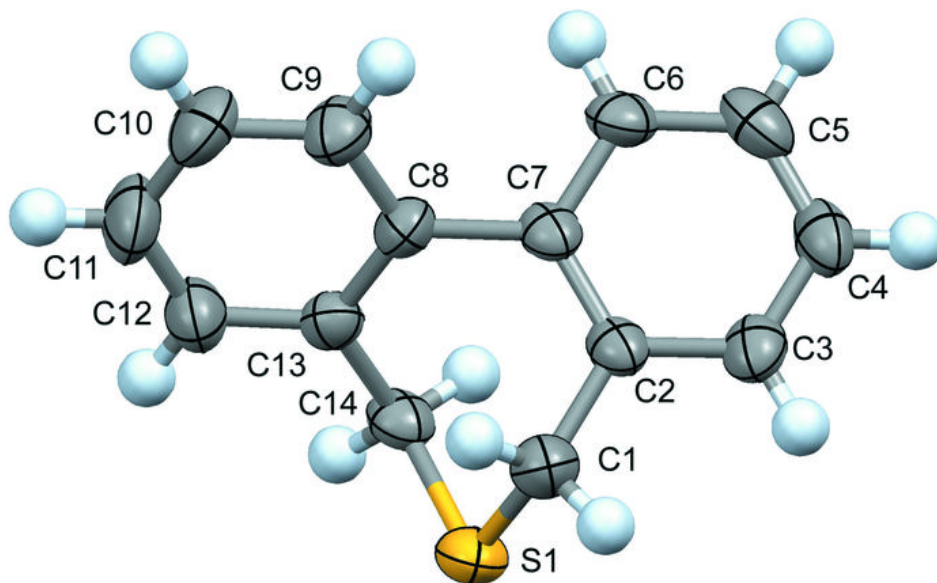


Fig. 2

